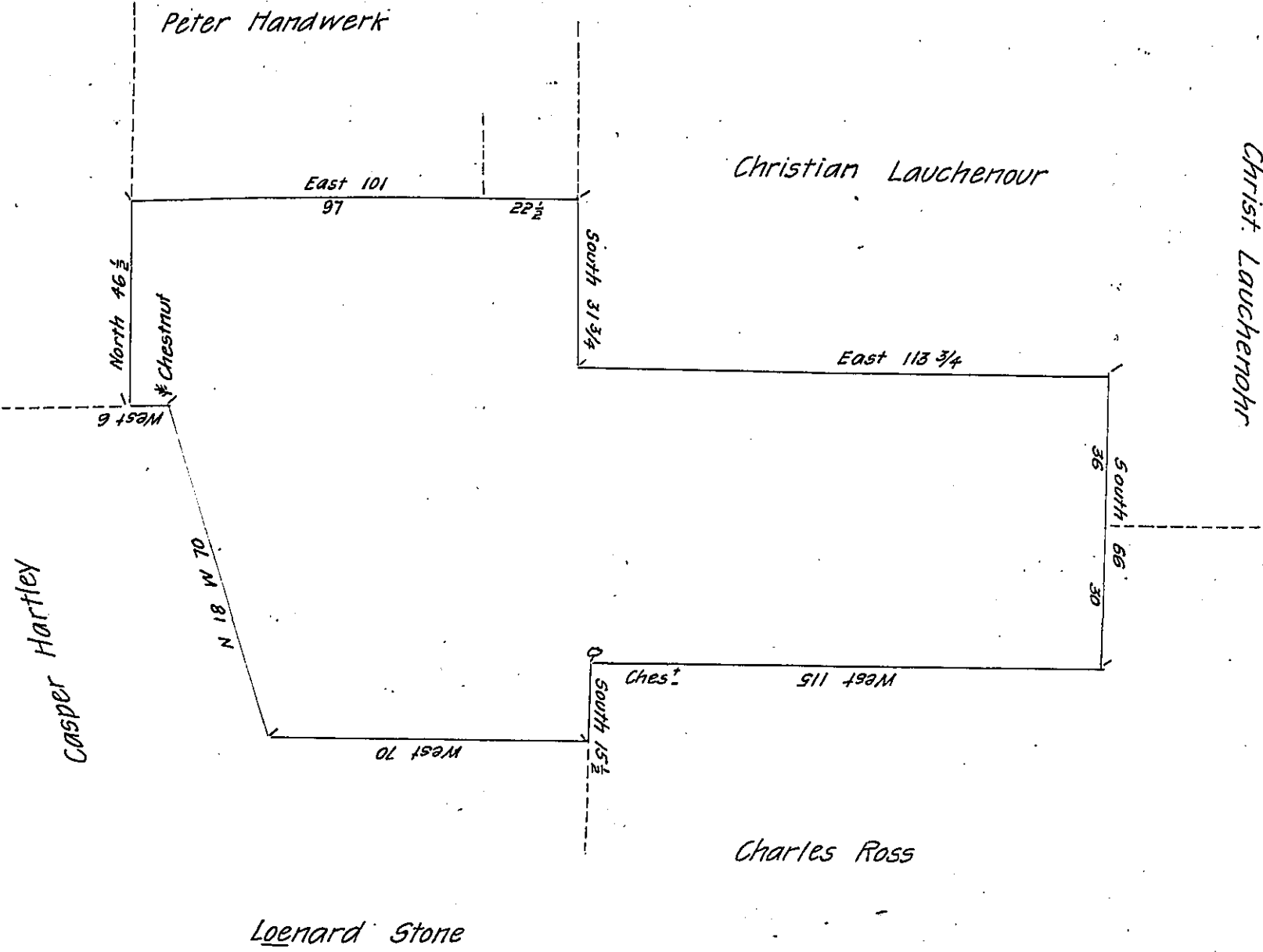


FORM No. 1.



Draft of a Tract of land containing ninety-nine acres and one hundred & twenty five perches and allowance of six per cent for roads &c. Situate in Heidelberg township in the County of Lehigh Surveyed the 10<sup>th</sup> day of September 1764 by James Scull then Co. Surveyor in pursuance of a warrant granted to Charles Ross dated the 6<sup>th</sup> day of October 1755

I hereby certify that the foregoing is a correct copy of a survey filed amongst the records of the County Surveyor's Office of this County and that it has been examined by me and found correct

Geo. Blank C. S.

To J. M. Campbell Esq  
Surveyor General

IN TESTIMONY that the above is a copy of the original remaining on file in the Department of Internal Affairs of Pennsylvania, made conformably to an Act of Assembly approved the 16th day of February, 1833, I have hereunto set my Hand and caused the Seal of said Department to be affixed at Harrisburg, this twenty first day of September 1906

*Laurel P. Brown*  
Secretary of Internal Affairs